



**Proliferous Rose (*Metamorphosis of Plants*)**

**EXECUTIVE EDITORIAL BOARD**  
**Victor Lange, Princeton University**  
**Eric Blackall, Cornell University**  
**Cyrus Hamlin, Yale University**

---

**Goethe's Collected Works, Volume 12**

**Johann Wolfgang von  
GOETHE**

# **Scientific Studies**

---

**Edited and Translated by Douglas Miller**

**Princeton University Press  
Princeton, New Jersey**

Published by Princeton University Press, 41 William Street,  
Princeton, New Jersey 08540  
In the United Kingdom by Princeton University Press, Chichester, West Sussex  
Copyright © 1988 Suhrkamp Publishers, New York, Inc.

All Rights Reserved

Reprinted in paperback by arrangement with Suhrkamp Publishers

**Library of Congress Cataloging-in-Publication Data**

Goethe, Johann Wolfgang von, 1749–1832.  
Scientific studies / Johann Wolfgang von Goethe ; edited and  
translated by Douglas Miller.  
p. cm. -- (Princeton paperbacks)  
Originally published: New York : Suhrkamp, 1988. (Goethe's  
collected works ; v. 12  
Includes bibliographical references  
ISBN 0-691-04347-7 (alk. paper)  
1. Science. I. Miller, Douglas (Douglas E.) II. Title.  
III. Series: Goethe, Johann Wolfgang von, 1749–1832.  
Works. English. 1994 ; v. 12  
PT2026.A1C94 1994 Vol. 12  
[Q1131]

831'.6 s—dc20  
[831'. 6]

95-36597

First Princeton Paperback printing, 1995

Princeton University Press books are printed on acid-free paper and meet  
the guidelines for permanence and durability of the Committee on  
Production Guidelines for Book Longevity of the Council on Library Resources

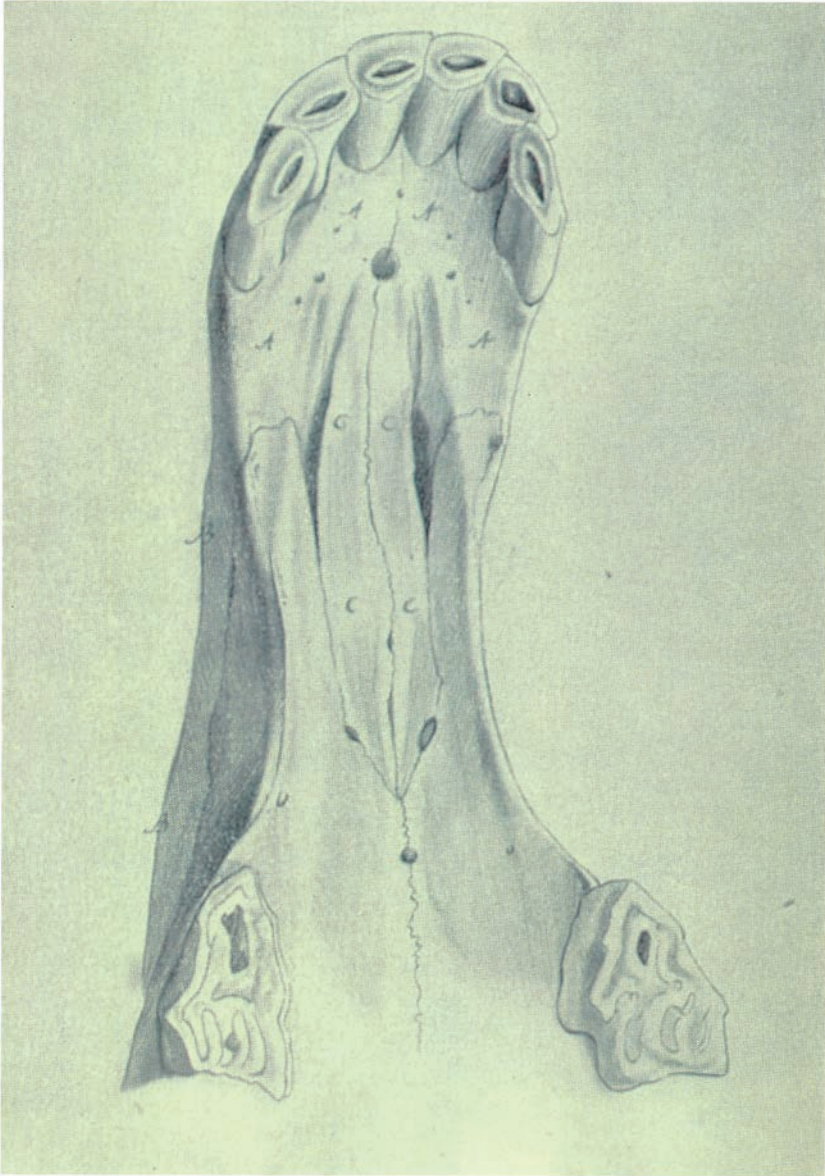
Printed in the United States of America

1 3 5 7 9 10 8 6 4 2

CONTENTS	ix
<b>VIII. Selections from <i>Maxims and Reflections</i></b>	<b>303</b>
Chronology of Goethe's Scientific Studies	313
Note on the Translation	315
Acknowledgments	318
Notes	319
Index	341
<b>Illustrations</b>	
Proliferous Rose	frontispiece
<i>Plates following page 206</i>	
Skull of a Horse	I
Human Skull	II
Plate I from <i>Theory of Color</i>	III
Plate II from <i>Theory of Color</i>	IV
Plate III from <i>Theory of Color</i>	V
Plate IV from <i>Theory of Color</i>	VI
Plate V from <i>Theory of Color</i>	VII
Plate VI from <i>Theory of Color</i>	VIII

COLOR PLATES

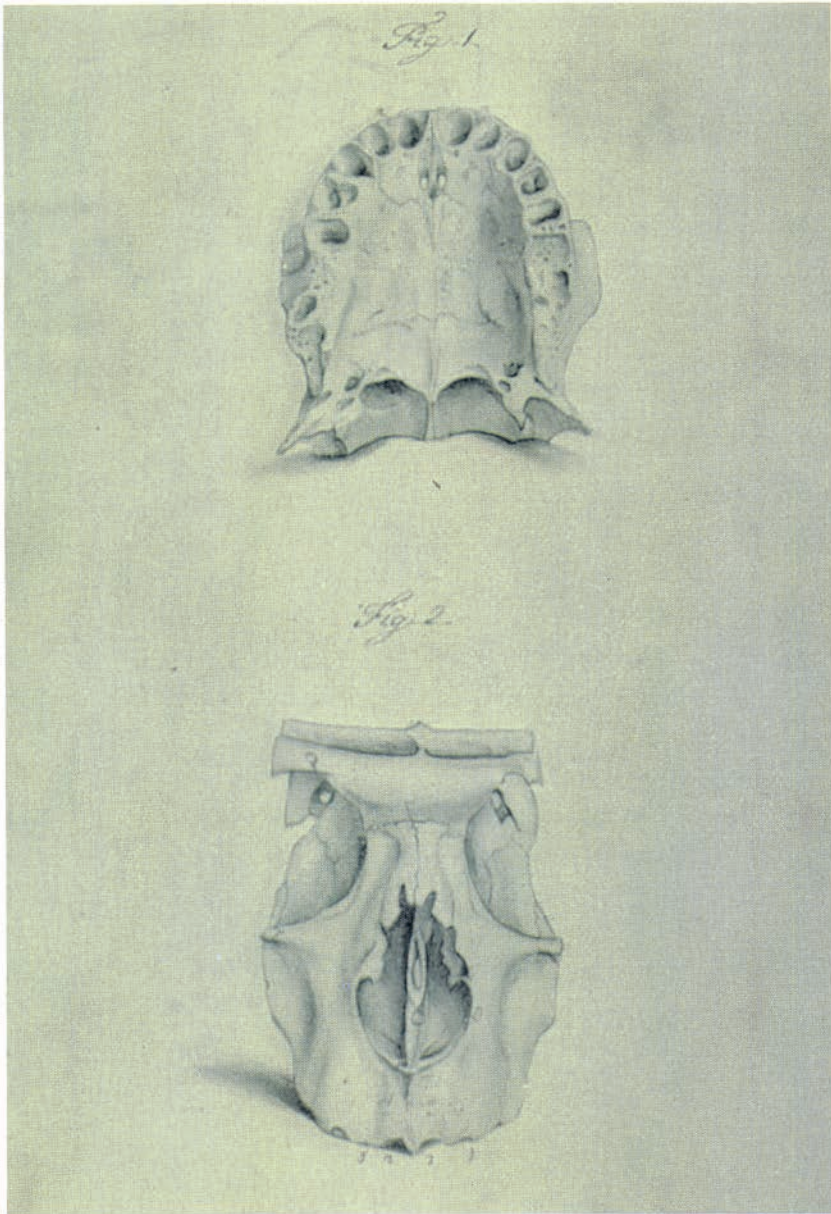
I



Skull of a Horse (from *An Intermaxillary Bone Is Present in the Upper Jaw of Man As Well As in Animals*, Plate I). A: *Corpus*; B: *Apophysis maxillaris*; C: *Apophysis palatina*.

II

COLOR PLATES



Human Skull (from *An Intermaxillary Bone Is Present in the Upper Jaw of Man As Well As in Animals*, Plate IX). 1: *Os intermaxillare* (bottom view); 2: *Os intermaxillare* (top view).

COLOR PLATES

III

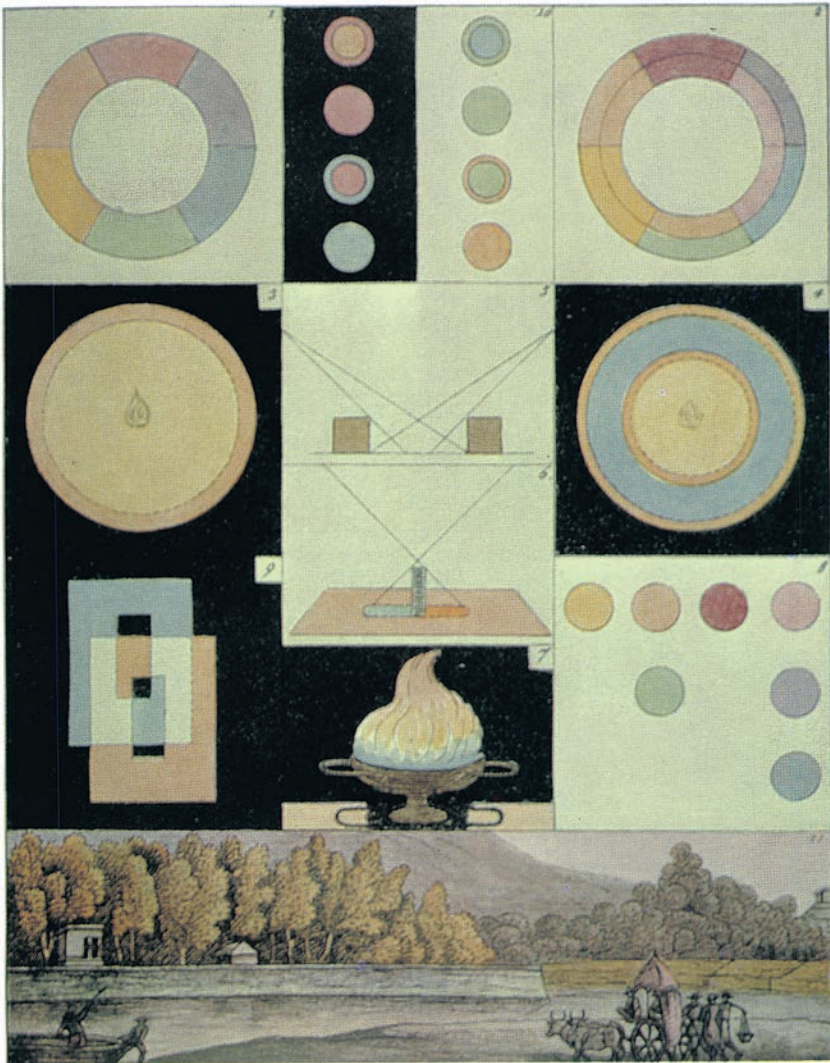


Plate I from *Theory of Color*. 1: color wheel; 2: color wheel (inset shows effects of acyanoblepsia); 3: objective halo on a candle-lit wall; 4: subjective halo seen around a candle flame; 5: method for observing colored shadows; 6: alternate method for observing colored shadows (shadows at sunrise or sunset); 7: flame against a black background; 8: test for acyanoblepsia; 9: double image in blue liquid against a reflective background; 10: fading of a blindingly bright colorless form; 11: landscape without blue as seen by an acyanobleptic.

IV

COLOR PLATES

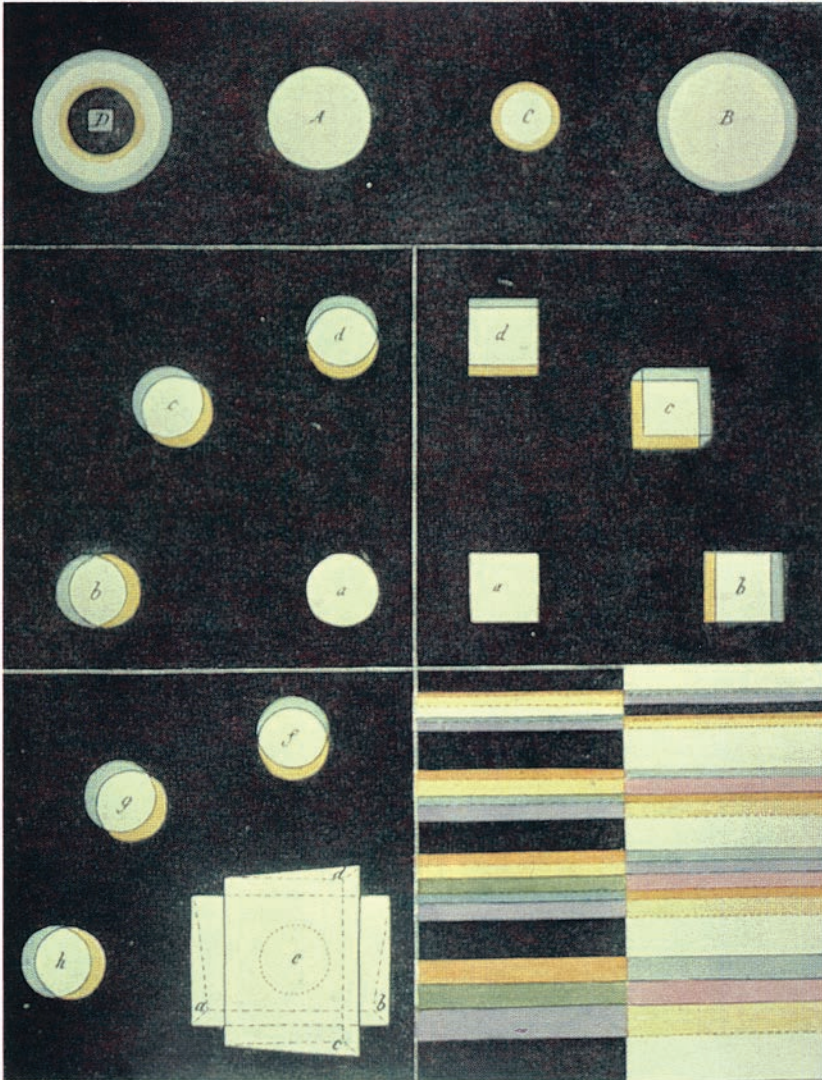


Plate II from *Theory of Color*. (Top) A: light disk on a black background; B: disk A through a convex lens; C: disc A through a concave lens; D: light disk with a small dark disk in the center as seen through a convex lens. (Center Left) Round forms through a prism. (Center Right) Square forms through a prism. (Bottom Left) Effect of combining two prisms. (Bottom Right) White and black stripes through a prism (increasing overlap of color).

COLOR PLATES

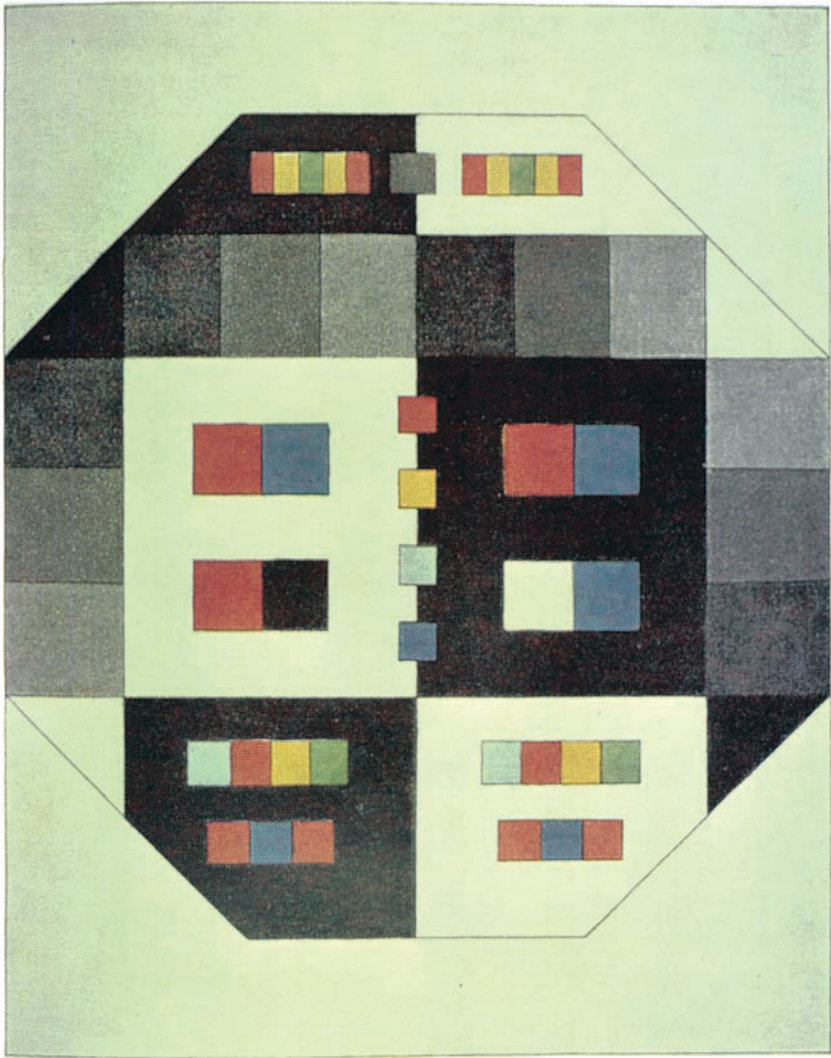


Plate III from *Theory of Color*. Colored forms to be viewed through a prism.

VI

COLOR PLATES

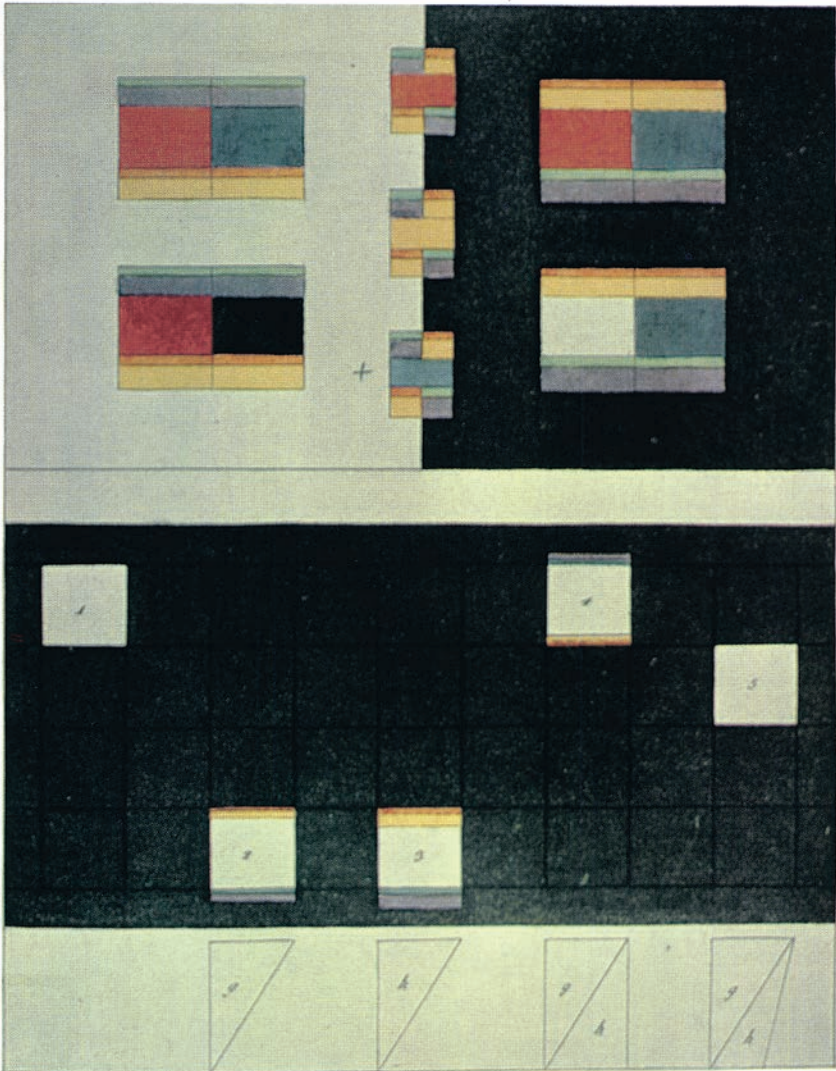


Plate IV from *Theory of Color*. (Top) Center section of Plate III as seen through a prism. (Bottom) Achromatic effects of crown glass (g) and flint glass (h).

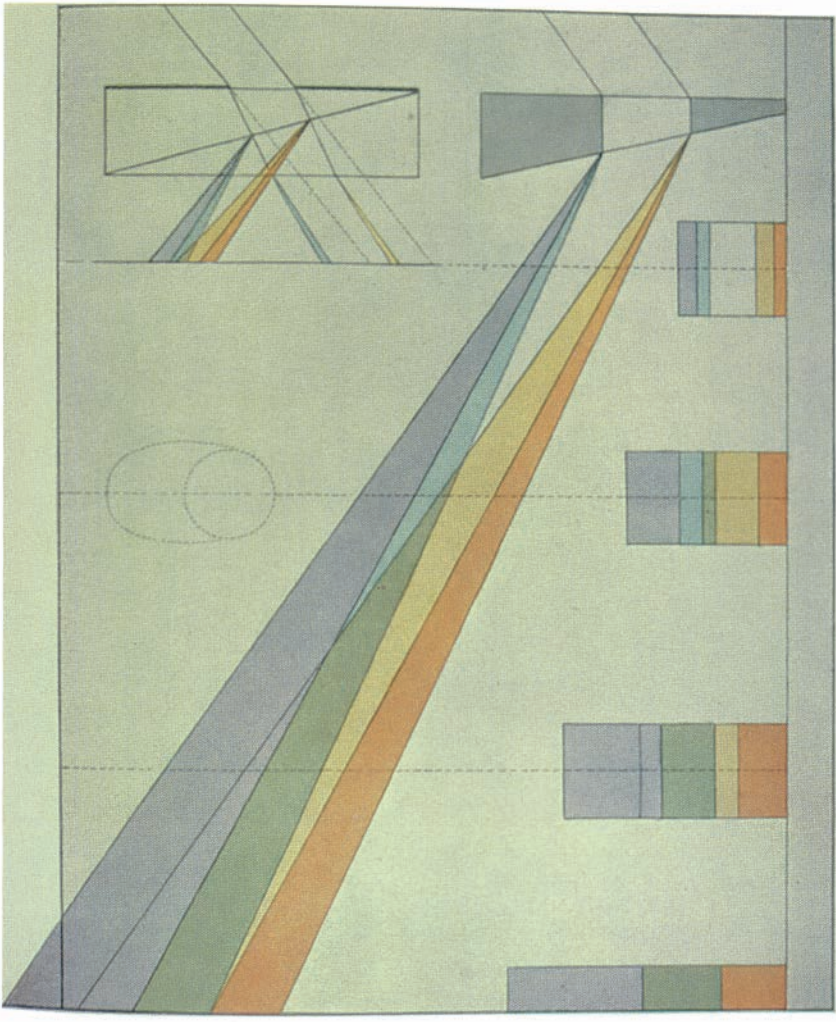


Plate V from *Theory of Color*. Refraction of a light form.

VIII

COLOR PLATES

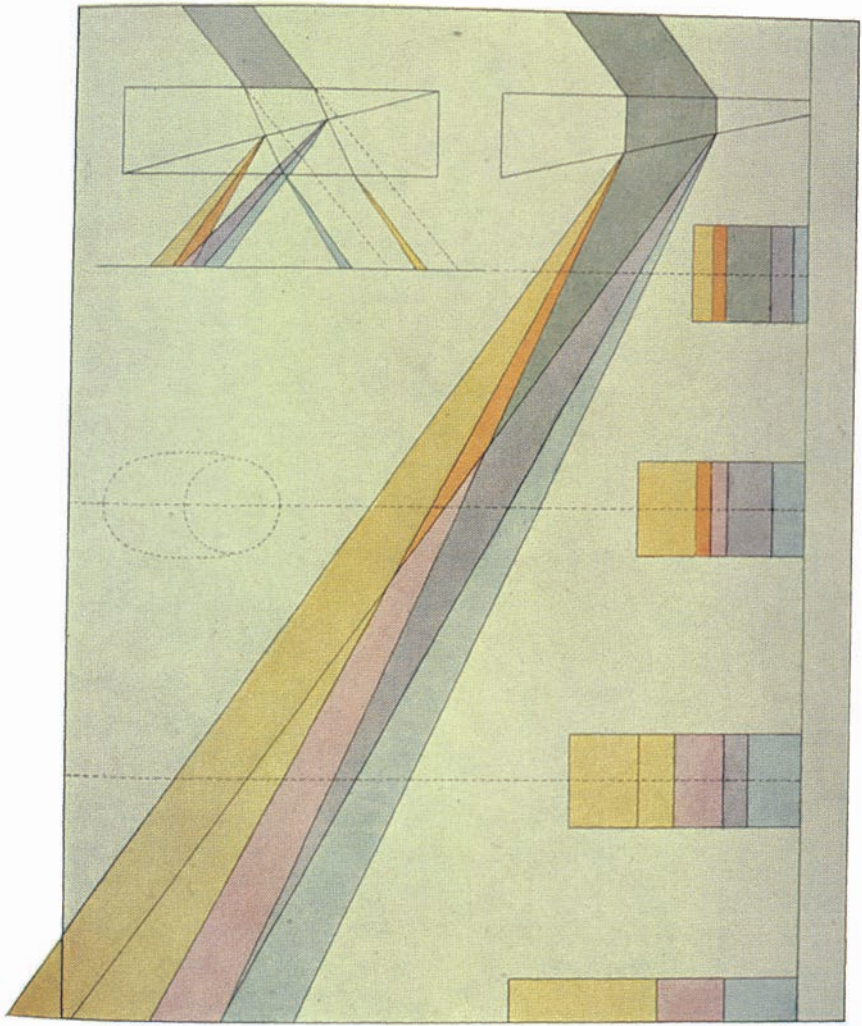


Plate VI from *Theory of Color*. Refraction of a dark form.